

Department of Planning, Industry and Environment  
18<sup>th</sup> October 2019

PO BOX 363 Lindfield NSW 2070

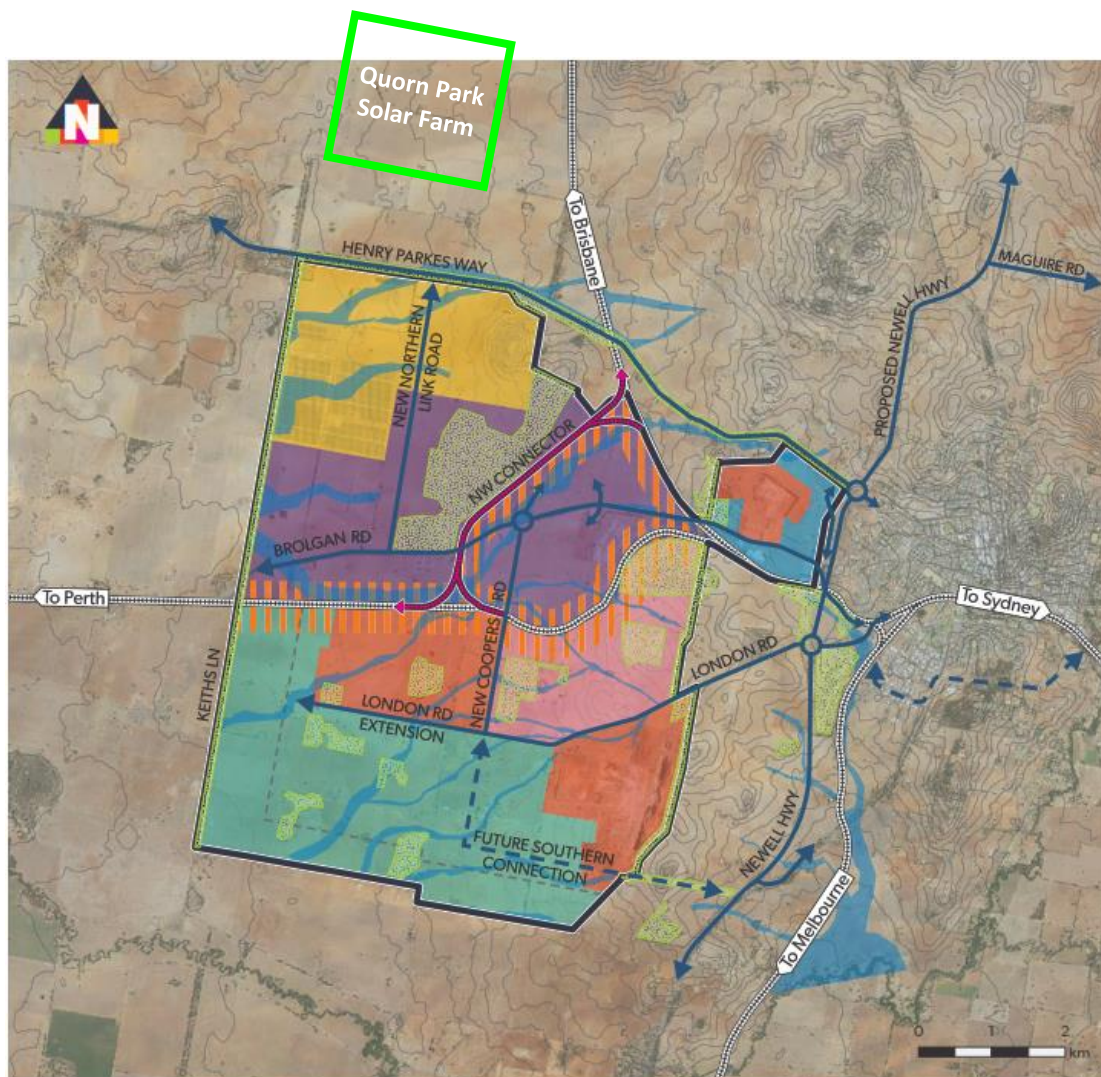
D +61 (0) 2 9416 1001

E colin@redpl.com.au

Re: Parkes Special Activation Precinct

Renewable Energy Developments (RED) is the developer of the Quorn Park Solar Farm near Parkes. We previously developed the Goonumbla Solar Farm which is under construction within the boundary of the proposed Special Activation Precinct (SAP). We have been involved in solar development in the Parkes region for the past four years and with renewable energy projects across NSW for twenty years. We encourage industrial development in Parkes and support the NSW Government's initiative in identifying the location for a SAP.

The following figure identifies the approximate location of the proposed Quorn Park Solar Farm. It is approximately 1200metres from the northern boundary of the proposed SAP.



RED has prepared a development application for the Quorn Park Solar Farm and submitted to the Department of Planning, Industry and Environment. It is a State Significant Development. We are undertaking extensive engineering analysis of the high voltage network and are progressing through Essential Energy's connection process. We hope to have approvals and a connection agreement by mid-2020. Construction would commence in early 2021. The generating capacity will be 80MW and will potentially include battery storage.

With Quorn Park Solar Farm, the Parkes region will have a total of 210MW of solar energy generation. The benefits to the region will be significant. Jobs will be created during construction and to a limited extent during the 30-year life of the solar generators. The projects will provide opportunities for local businesses to supply equipment, contracting services and support services. Electricity customers will benefit from lower cost electricity as the region becomes a net exporter of electricity. Large electricity customers such as regional councils, mines, warehouses and logistics facilities can potentially contract directly with Quorn Park Solar Farm to procure long term electricity supply, capping costs and delivering savings over a significant period. The availability of clean electricity is a significant marketing opportunity for the region to attract new industrial development such as data centres, mines and food processing. It is an opportunity to support the aims of the SAP and deliver investment and jobs to the Parkes region.

We look forward to continuing consultation of the SAP as it progresses and can provide more information on our development as required.

Yours sincerely,

A handwritten signature in black ink, appearing to read 'Colin Liebmann', with a horizontal line underneath the name.

Colin Liebmann  
Director  
Phone: [REDACTED]