

# DRAFT State Environmental Planning Policy (Western Sydney Employment Area) Mamre Road Precinct

## DRAFT Land Zoning Map

### Legend

#### Zone

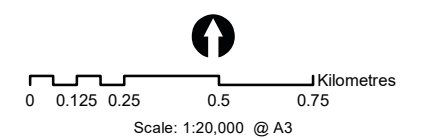
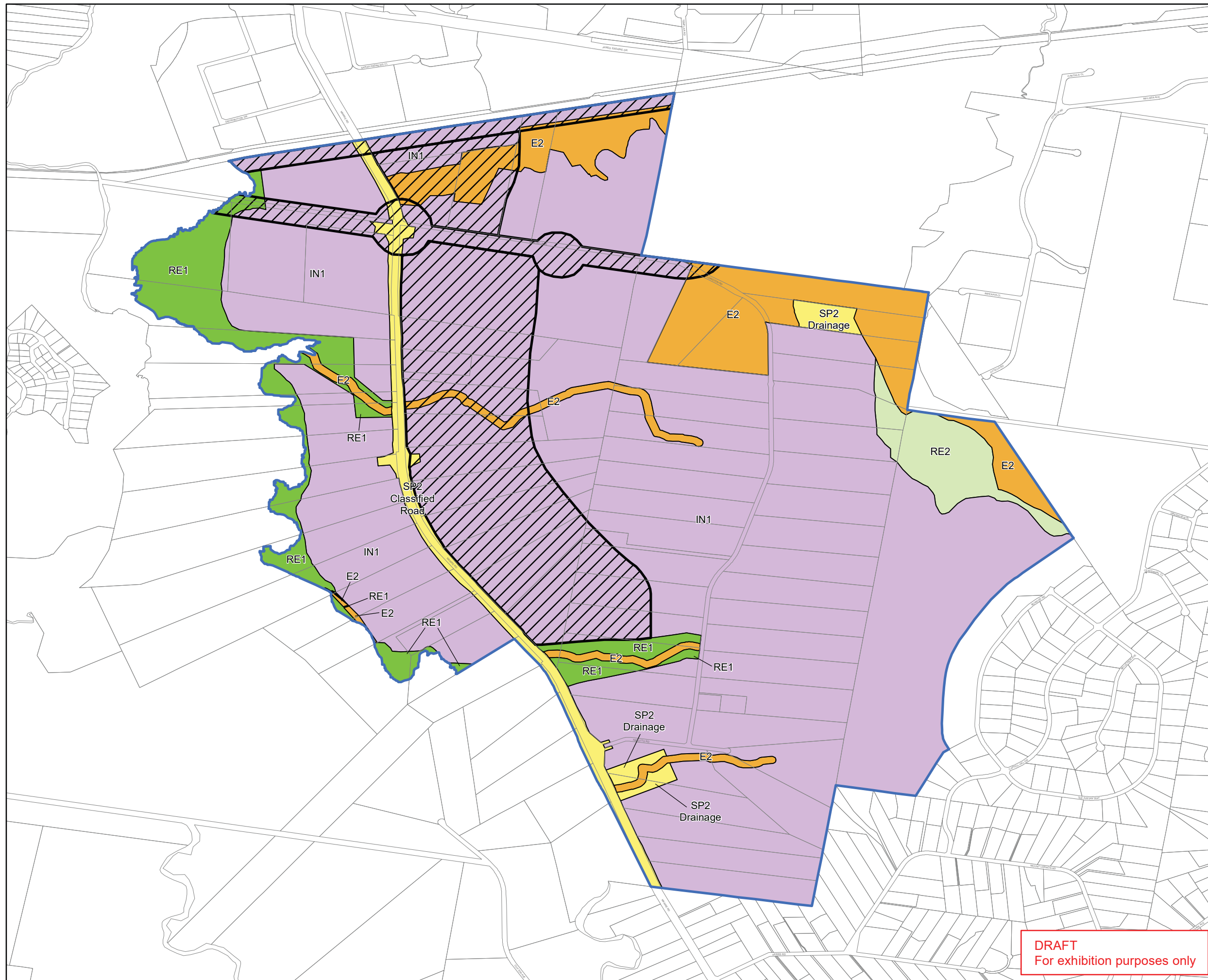
- E2 Environmental Conservation
- IN1 General Industrial
- RE1 Public Recreation
- RE2 Private Recreation
- SP2 Infrastructure

  Mamre Road Precinct Boundary

  Transport Infrastructure Investigation Area

#### Cadastre

  Cadastre 13/11/2019 © Spatial Services



**DRAFT**  
For exhibition purposes only

# DRAFT State Environmental Planning Policy (Western Sydney Employment Area) Mamre Road Precinct

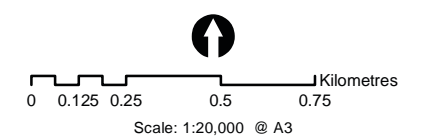
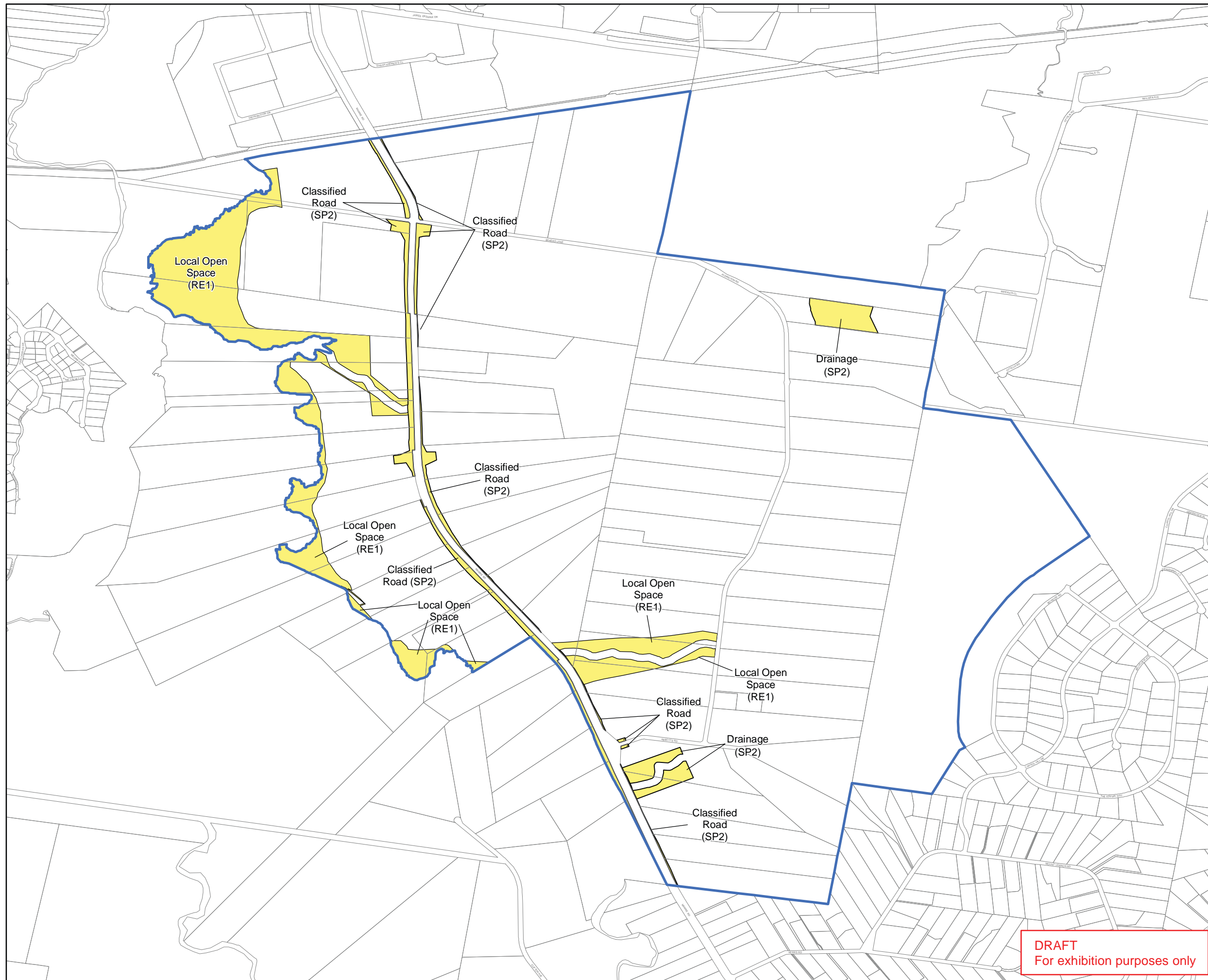
## DRAFT Land Reservation Acquisition

### Legend

- Drainage (SP2)
- Classified Road (SP2)
- Local Open Space (RE1)
- Mamre Road Precinct Boundary

### Cadastre

- Cadastre 13/11/2019 © Spatial Services



**DRAFT**  
For exhibition purposes only



DRAFT State Environmental  
Planning Policy (Western  
Sydney Employment Area)

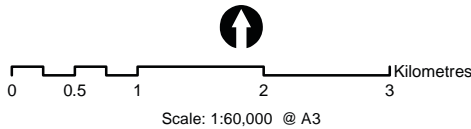
DRAFT Land Application Map

Legend

- Subject Land
- Cadastrre 04/11/2019 © Spatial Services

Precinct Number and Name

- 1 Former Wonderland
- 2 Eastern Creek
- 3 Huntingwood
- 4 Raceway
- 6 Ropes Creek
- 7 Erskine Park
- Employment Lands
- 8 South of Sydney Catchment AuthorityWarragamba Pipelines
- 9 Quarantine Station
- 10 Greystanes Northern Employment Lands
- 11 Mamre West
- 12 Mamre Road Precinct



DRAFT  
For exhibition purposes only



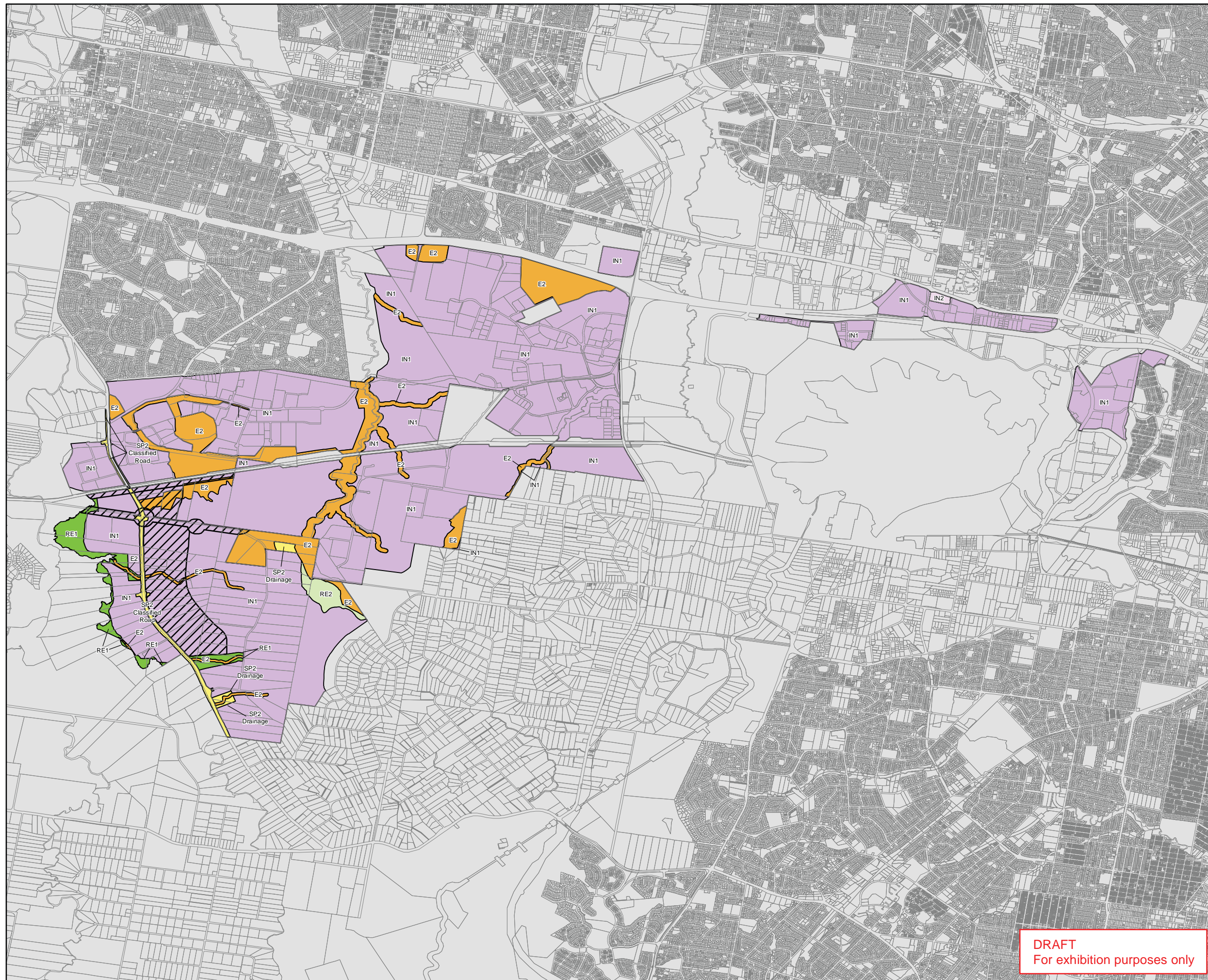
**DRAFT State Environmental  
Planning Policy (Western  
Sydney Employment Area)**

**DRAFT Land Zoning Map**

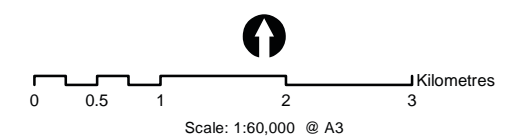
**Legend**

**Zone**

- E2** Environmental Conservation
- IN1** General Industrial
- IN2** Light Industrial
- RE1** Public Recreation
- RE2** Private Recreation
- SP2** Infrastructure
- Transport Infrastructure Investigation Area
- Cadastre 13/11/2019 © Spatial Services



**DRAFT**  
For exhibition purposes only



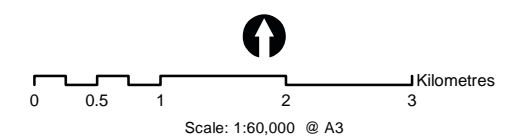
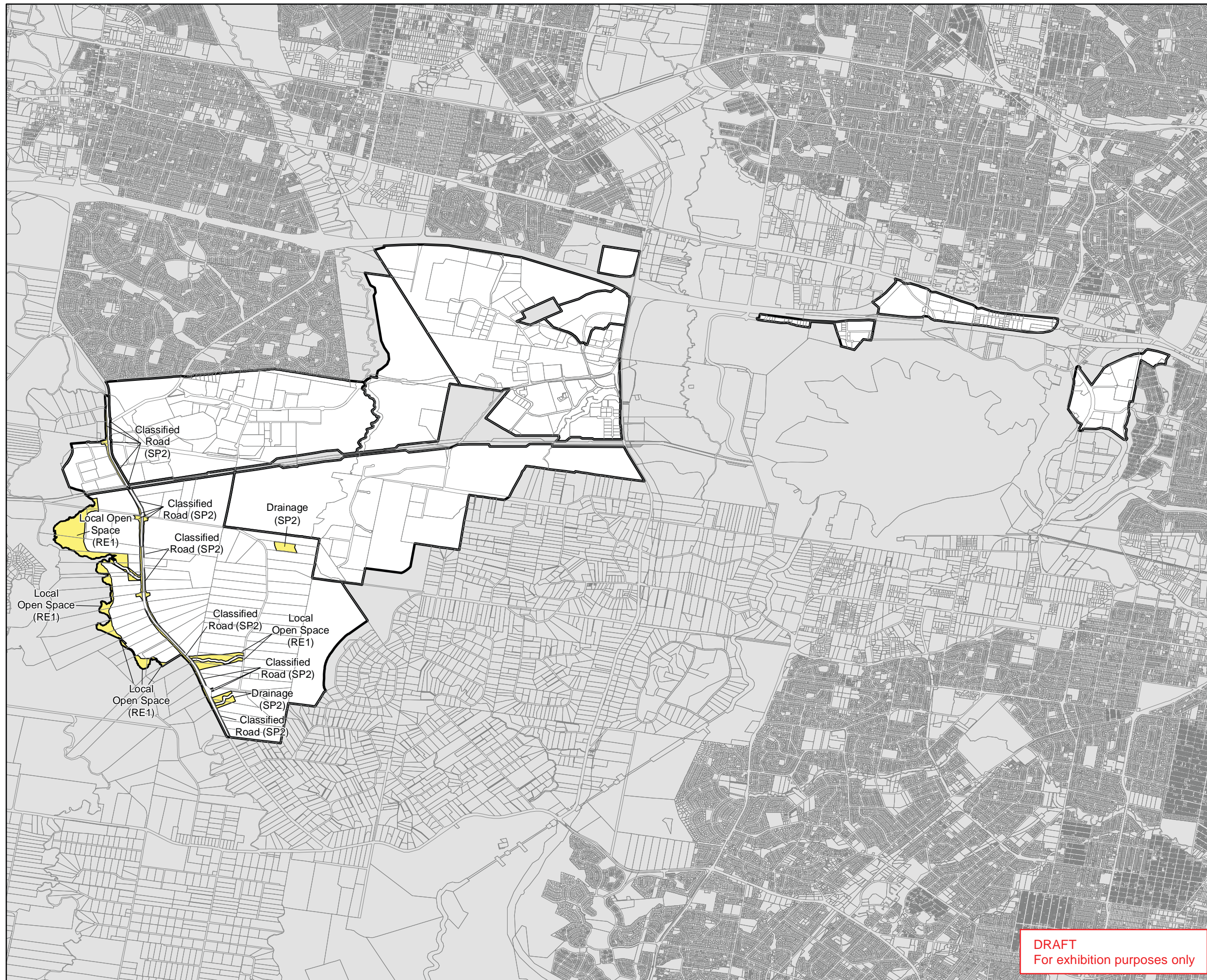


# DRAFT State Environmental Planning Policy (Western Sydney Employment Area)

## DRAFT Land Reservation Acquisition

### Legend

- Drainage (SP2)  
Classified Road (SP2)  
Local Open Space (RE1)
- Land Application
- Cadastre 13/11/2019 © Spatial Services



**DRAFT**  
For exhibition purposes only