

From: [Jason Ip](#)
To: [Melissa Halloran](#)
Subject: FW: Draft water availability info sheet for industry
Date: Tuesday, 29 September 2020 4:13:12 PM
Attachments: [image001.png](#)
[image002.png](#)
[image003.png](#)
[image004.png](#)
[image005.png](#)
[Riverina-logo-RGB_576ee012-d318-45d1-b3d4-96675b164ae1.png](#)
[058_line_9bae9502-1e3a-48a3-ba5e-34ed9cd44185.png](#)
[facebook_0cb79cc1-214c-4002-8c4b-c9ca0b415724.png](#)
[twitter_e8aa69f5-dece-497f-935b-f4792ecc38ad.png](#)
[insta_fc5b31ea-d32a-42ef-a2c3-7eaa36668e27.png](#)
[linkedin_280b9cb5-97f7-4db1-a7af-3ba1f316c57e.png](#)
[water_investment_draft.pdf](#)

Hi Melissa,

FYI – Here's the draft fact sheet that you might like to use as part of our submission.

Regards,

Jason Ip



Jason Ip
Manager Operations



E [REDACTED]
91 Hammond Ave (PO Box 456)
Wagga Wagga NSW 2650



www.rwcc.nsw.gov.au

This email remains the property of Riverina Water County Council. The message is intended for the addressee named and may contain privileged or confidential information. If you have received this email in error, you are requested to contact the sender and delete the email. Consider the environment before printing this email.

From: Joshua Lang [REDACTED]
Sent: Monday, 17 February 2020 3:55 PM
To: [REDACTED]
Subject: Draft water availability info sheet for industry

Hi gentlemen,

A draft information sheet for industry and investors is attached following our recent meeting with WWCC. No further information came through from WWCC so they said just proceed and get something together.

I've pulled the info from the annual report, our website, DPIE + WaterNSW reports and general comments made during the meeting, and otherwise elaborated/guessed so please check you are comfortable with the claims.

WWCC and the SAP team will look to use this to handout to interested parties, and WWCC will combine some information into their wider city prospectus also.

Thanks,
Josh

Joshua Lang
Community Engagement Officer



91 Hammond Ave (PO Box 456)
Wagga Wagga NSW 2650



rwcc.nsw.gov.au



Providing industry with secure and reliable water

Based in the thriving city of Wagga Wagga, Riverina Water is the leading provider of safe and reliable water across the Southern NSW region.

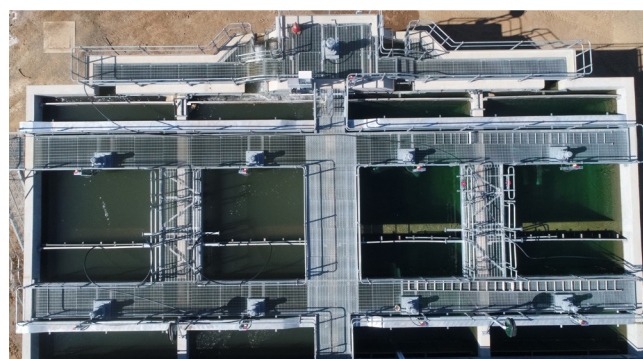
Located on the Murrumbidgee River downstream from the Burrinjuck and Blowering dams, Riverina Water offers a unique opportunity - secure and affordable water supply coupled with significant NSW Government investment in Wagga Wagga's industrial precinct.

Secure water sources

- Riverina Water has the advantage of sourcing water from its network of bores and the river itself
- The Burrinjuck and Blowering dams provide regular water flows down the Murrumbidgee River, meaning surface water is readily available and the groundwater sources are sustainable
- Riverina Water has no current restrictions on industrial water usage

Meeting demand now and into the future

- In 2018/19, Riverina Water utilised only 64.7 per cent its total water licence, which is more than 24,300 megalitres
- Riverina Water controls the majority of groundwater licences in the region, which increases its annual water allocation and allows it to ensure groundwater is sustainably managed



Investment in infrastructure

- Riverina Water has constructed a new \$35M water treatment plant (pictured) at its main site in Wagga Wagga, which is designed to meet water needs to 2040 and beyond
- The new plant has a capacity of 55 megalitres per day compared to the previous 40 megalitres, allowing it to handle peak demand periods and future development with ease
- In addition, Riverina Water is regularly constructing new reservoirs and upgrading infrastructure to provide reliable drinking water to 73,000-plus customers

Riverina Water sources, usage and allocations

	Water access licence (ml)	Used (ML)	% of Allocation
Surface water - Wagga	7,000	2,912	41.5%
Surface water - other	819	56	6.8%
Ground water - Wagga	14,000	11,808	84.3% (or 95.4% of Long Term Extraction Limit, LTAEL)
Ground Water - other	2,535	989	39.0%
Total Water	24,354	15,764	64.7%

Riverina Water supply area



Working together to help industry thrive in the Riverina region

Our commitment to our customers is to provide safe and reliable water at the lowest sustainable cost.

We are continually investing in new infrastructure to improve our network and ensure it has the capability to deliver water for the growing city of Wagga Wagga and surrounding region.

Having access to high quality, bulk water is an essential ingredient for any business or industrial development.

Our water security and future-proofed infrastructure, coupled with unheralded investment by the NSW Government and Wagga Wagga City Council's strategic planning, creates a unique opportunity for industry.

Our headquarters is located on the Sturt Highway in the heart of Wagga Wagga, just 11km from the Bomen Industrial Area and Special Activation Precinct.

Contact myself and our team to discuss how we can help your business grow in the Riverina.

**General Manager
Andrew Crakanthorp**



Responding and adapting to a growing city's needs

Riverina Water has a proven track record of delivering infrastructure to facilitate growth and private development.

In December 2019, a new 4.5 megalitre reservoir (pictured) was commissioned to meet the needs of the expanding Lloyd and Glenoak suburbs.

Construction took place over six months and was operational well before the residential development was complete. "We have the ability to mobilise our resources and deliver the vital infrastructure that developers and industry need in a timely manner," Riverina Water's Director Engineering Bede Spannagle said. "If you are considering Wagga Wagga as a location for your development, you can do so with the confidence Riverina Water will

By the numbers

30 bore/well licenses (70% of supply)
10 surface water licenses (30% of supply)
14 Water Treatment Plants
70 Pumping Stations
67 Water Storage Reservoirs
1300km of pipelines

work with you to meet the water supply needs of your business, no matter the industry.

"We are in the enviable position that much of the hard work is done – our new water treatment plant has the capacity to meet growth for another 30 years and we have improved our network to the north towards the Special Activation Precinct in the Bomen industrial area."

Allocated water being delivered as normal

The Wagga Wagga region is currently receiving all allocated water under normal regulated river operations.

The NSW Government Department of Planning, Industry and Environment (DPIE) and WaterNSW both issue regular allocation and availability reports.

The Murrumbidgee Valley, in which Wagga Wagga is located, is described by DPIE as Stage 1 - Normal Management. This means all surface water is delivered as normal and groundwater levels are within acceptable ranges, with normal annual recovery expected.

Contact us

General Manager Andrew Crakanthorp
acrakanthorp@rwcc.nsw.gov.au
02 69220603 | 0409662307
rwcc.nsw.gov.au

Information sources

Riverina Water Annual Report 2018/19: rwcc.nsw.gov.au

Water NSW Regional Availability Reports: waternsw.com.au

Department of Planning, Industry and Environment Water Allocation Statements: industry.nsw.gov.au

